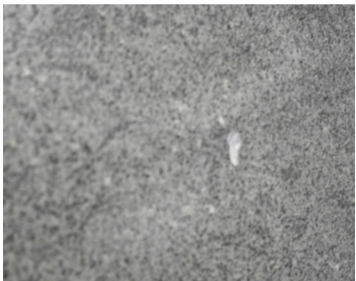


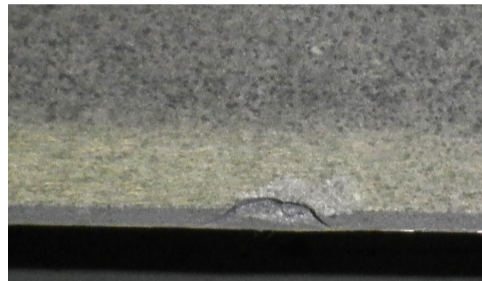
NEOLITH

GUIDE FOR REPAIRING NEOLITH SURFACE DEFECTS CAUSED BY CHIPPING

Ceramic surfaces can get damaged for a variety of reasons. Most often it's due to an impact from a heavy object such as cooking pots.



Chipped surface



Chipped edge

This guide explains how to repair a chipped surface. Bear in mind that it is **not a perfect repair; it is very difficult to match the tonality and texture of the surface with epoxy acrylate resins.**

Step 1

Clean the area first using Acetone and allow it to fully evaporate before proceeding any further.

Make sure that the area is free of grease and debris.

Step 2

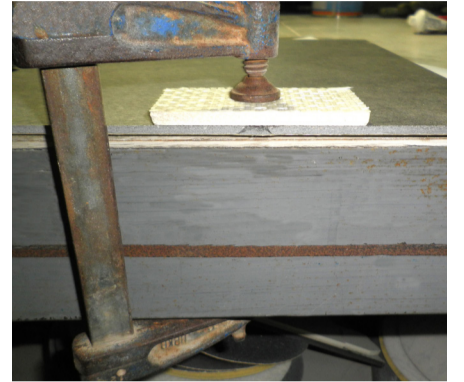


Mix the two part epoxy, adding the color to tint the epoxy to match your Neolith countertop.

TIP:

Plan on repairing all of the chips at one time, because the two part epoxy will cure quickly. Also, only mix enough so you can fill the chips and have a little left over: epoxy cannot be stored once mixed.

Step 3



Use a piece of Neolith to mimic the surface finish and proceed to fill the chip with the already mixed resin.

Step 4

Using a cloth soaked in acetone, additional texture can be added to the resin to further mimic the surrounding surface.

Make sure the level of the resin does not surpass the adjacent surface.

Clean the excess resin on the surface before it hardens, using a cloth soaked in acetone.



Step 5

Once the resin hardens, grind down the surplus resin on the edge mechanically, surface repairs are best grinded down manually to avoid damaging the surface.

